

### Applications

- SONET/SDH Systems
- Optical Communications
- Fiber Optic Sensing
- CATV
- Laboratory

### Description

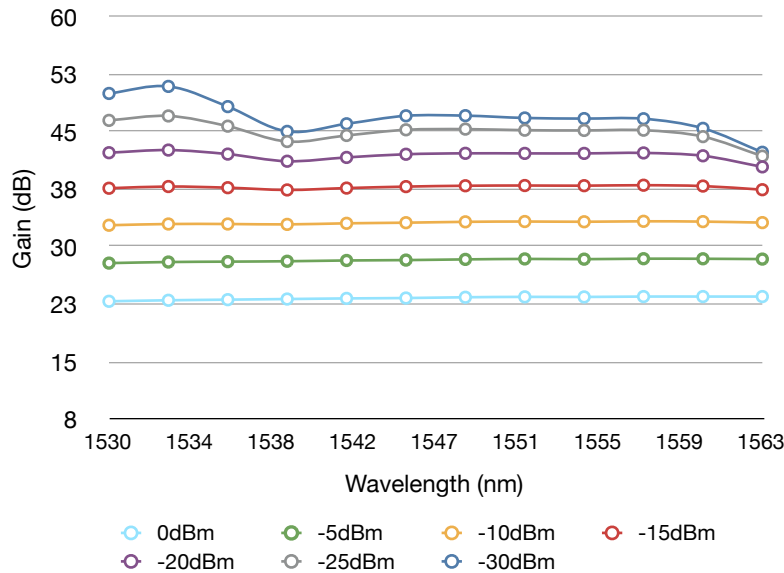
Amonics' specialist products, Erbium-doped Fiber Amplifiers (EDFA), are made with high power pump laser and high stability pump combiners, robust in high power boosting. The result are EDFAs that possess high output power, high gain with very low noise, and are ideal for high power EDFA applications. The turnkey microprocessor controlled benchtop EDFAs manage alarms and status indicators. An integrated RS232 computer interface enables easy control, diagnostic functions and data acquisition. The benchtop EDFA series consist of different type of EDFAs for various applications such as general purpose, pre-amplifier, booster, in-line, polarization maintaining, C+L band amplification.

### Key Features

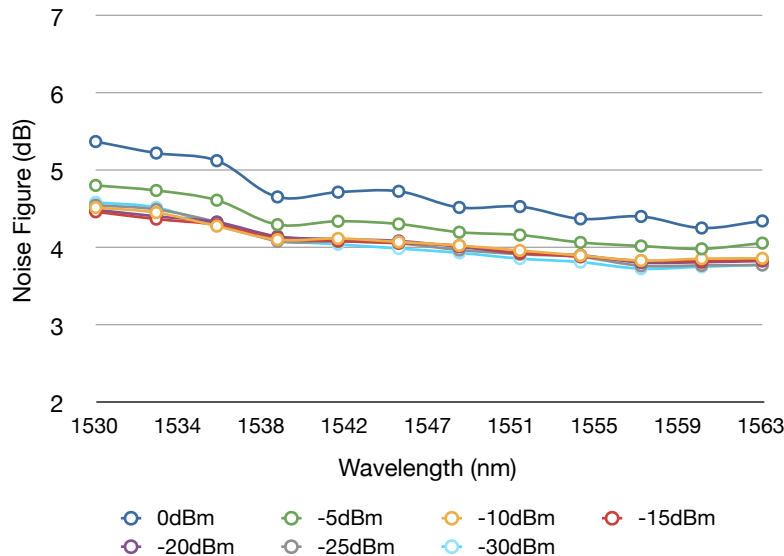
- Turnkey device
- RS232/Ethernet computer interface
- High output power
- High gain
- Low noise figure
- Two year warranty



**AEDFA-23-B-FA Gain Curve**



**AEDFA-23-B-FA Noise Figure Curve**



### Standard EDFA Specifications

	AEDFA-13	AEDFA-18	AEDFA-23
Saturation Output Power (at -3dBm input signal)	> +13dBm	> +18dBm	> +23dBm
Small-Signal gain at 1550nm (at -30dBm input signal)	> 30dBm	> 32dBm	> 37dBm
Noise Figure (typ.) (at -3dBm input signal)	5.0dB	5.5dB	6.0dB
Operating Wavelength	1528nm – 1565nm		
Input Isolation	> 30dB		
Output Isolation	> 30dB		
Polarization Dependent Gain	< 0.3dB		
Control Mode	ACC, (Option : APC, AGC)		

\* Other output power models available upon request

### General Environmental Parameters

Parameter	Unit	Specification
Operation Temperature Range	°C	0 to +40
Storage Temperature Range	°C	-10 to +70
Power Supply	VAC	90 – 240, 47 – 63Hz
Dimensions	mm	260(W) x 330(L) x 120(H)
Control	-	Keylock switch, optical output power
LCD Display	-	Output power, Pump laser current
Computer Interface	-	RS232 (Labview contro software & connection cable included) / Ethernet (option)
Protection	-	Pump laser over heat warning
Optical Connector	-	FC/APC, FC/UPC, SC/APC, SC/UPC
Optical Fiber	-	SMF - 28

### Option:

- Gain Flattening Filtering
- APC or AGC Control Mode
- Input Power Monitoring
- Benchtop or 19" Rackmount Housing



### Ordering Information

Product Code	AEDFA-xx-y-zz	xx : Saturation Output Power in dBm y : B for Benchtop case, R for 19" Rackmount case zz : FA for FC/APC, FC for FC/UPC SA for SC/APC, SC for SC/UPC

Amonics undertakes a continuous and intensive product development to ensure its products perform to highest technical standards. As a result, the specifications in this document are subject to change without notice.

Amonics Limited, 14/F, Lee King Industrial Building, 12 Ng Fong Street, San Po Kong, Kowloon, Hong Kong  
Beijing Amonics Co. Ltd. Room 902, Unit 1, NO.99 Chaoyang North Road, Beijing China 100025

contact@amonics.com www.amonics.com HK Tel: +852 2428 9723 HK Fax: +852 2428 9704 Beijing Tel: +86 10 84783386 Beijing Fax: +86 10 84783396