

Multimode Pump Laser Protector(MMPLP)

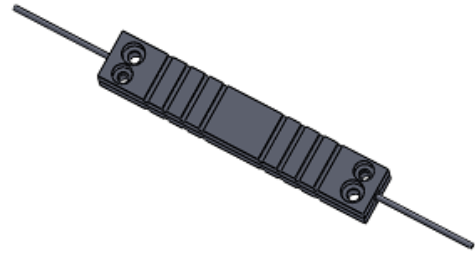
➤ Features

- High Power Handling
- Low Insertion

➤ Applications

- Fiber Laser

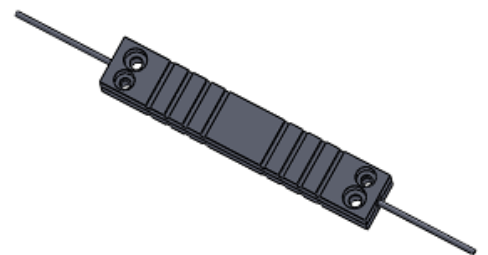
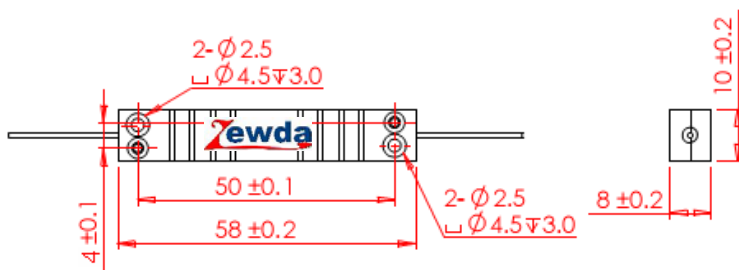
➤ Product Characteristics



Parameters	Unit	Values
Pump Laser Central Wavelength	nm	915 or 975
Operating Wavelength Range	nm	± 15
Typ. Pump Insertion Loss	dB	0.3
Max. Pump Insertion Loss(-5~70℃)	dB	0.5
Operating Signal Wavelength Range	nm	1020~1120
Min. Backward Signal Attenuation	dB	50
Max. Optical Power (CW)	W	7 10 25
Min. Return Loss	dB	50
Fiber Type	/	250um Multimode Fiber,105/125
Operation Temperature	℃	-5 ~ +70
Storage Temperature Range	℃	-40 ~ +85

\* Above specifications are for device without connector.

➤ Package Dimensions



➤ Ordering Information

# Data Sheet



ZMP -①①①①-②②-③-④-⑤-⑥-1414

① Wavelength 915-915nm 975-975nm	② Optical Power 38: 38dBm-7W 40: 40dBm-10W 44: 44dBm-25W	③ Fiber Type S-Specify
④ Connector N: NONE	⑤ Fiber Jacket B-Bare Fiber; L-900um Loose Tube; S-Specify	⑥ Fiber Length 1- 1m, S-Specify
④ Fiber Numerical Aperture 12-0.12 15-0.15 22-0.22		

 Other Zewda products which may be of interest:

- High Power Isolator
- PM series
- Pump Protector
- Pump Combiner
- Quartz Capillary
- High Power Large Beam Collimator

Welcome to visit our website <http://www.zewda.com>

Please send your required specifications to [sales@zewda.com](mailto:sales@zewda.com) or contact your local sales representative if you are interested at any of them.